

# Chaînes simples d'ancrage

63 a 220 KV pour fixation de protections côté ligne

# Single dead end strings

63 to 220 KV for protections line end

# Cadenas de amarre sencillas

63 hasta 220 KV para protecciones lado conductor

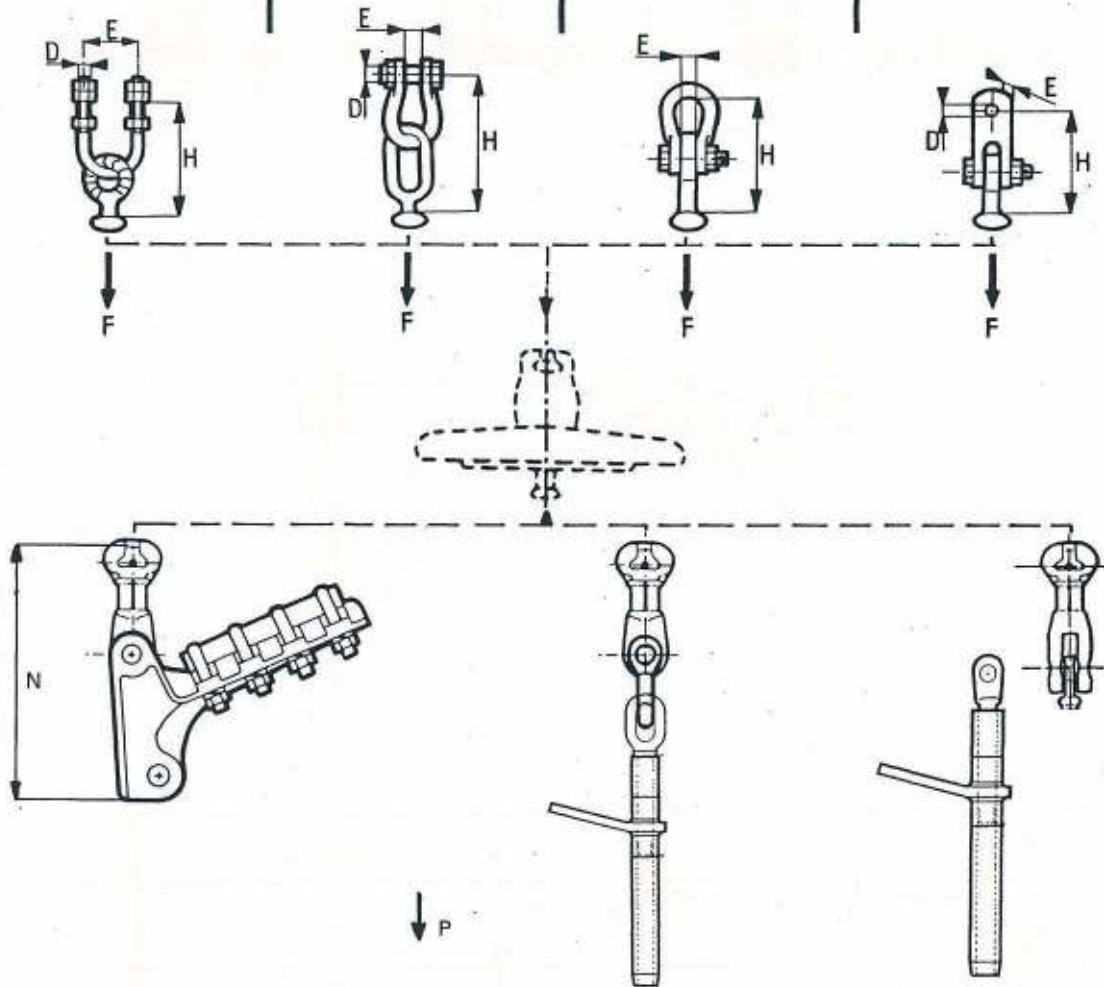
TRANSPORT  
TRANSMISSION LINES  
TRANSPORTE



1003-16  
8710

## CARACTÉRISTIQUES TECHNIQUES / TECHNICAL DATA / DATOS TECNICOS

Isolateur	Norme/Standard/Norma							
	16	20	16	20	16	20	16	20
	16	20	16	20	16	20	16	20
H (mm)	150	200	188	225	130	175	130	145
F (daN)	12000	16500	12000	16500	12000	16500	12000	16500
D (mm)	18	20	16	18			16	18
E (mm)	70	70	20	20			22	22
Poids Weight (kg) Peso	1,055	1,510	1,125	1,510	0,850	1,325	1,105	1,415



Ø mm Cond.	mini	5	7,5	14	17,5	23	32	38
	maxi	15	15,75	21,5	22,7	32	40	47
P (daN)		6000	6000	12000	12000	12000	12000	15000
N (mm)		245	221	290	330	440	440	655
	Poids Weight (kg) Peso	2,150	1,700	3,080	4,420	6,950	6,950	14,710
16	N (mm)	255	231	300	340	450	450	665
	Poids Weight (kg) Peso	2,570	2,080	3,500	4,800	7,360	7,360	15,120
20								

Le choix de la pince ou du manchon d'ancrage est fonction du conducteur utilisé.  
Voir chapitres 1102 et 1103 respectivement.

Selection of dead-end, u-bolt or compression clamp according to choice of conductor.  
See 1102 and 1103 chapters.

Selección del manguito o grapa de anclaje según el conductor utilizado.  
Vease los capítulos 1102 y 1103.

# Chaînes simples d'ancrage

63 a 220 KV pour fixation de protections côté ligne

# Single dead end strings

63 to 220 KV for protections line end

# Cadenas de amarre sencillas

63 hasta 220 KV para protecciones lado conductor

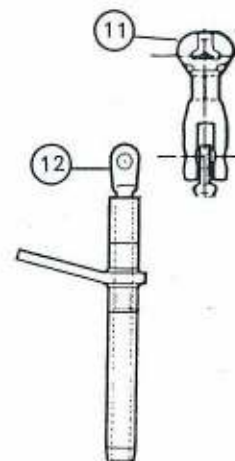
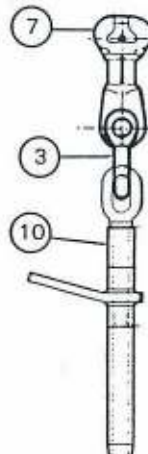
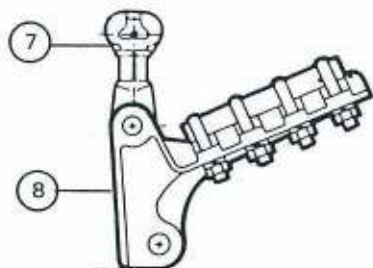
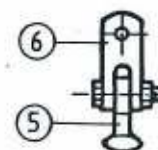
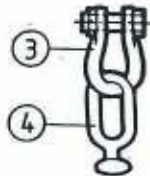
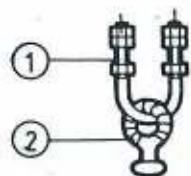
TRANSPORT  
TRANSMISSION LINES  
TRANSPORTE



1003-17  
8710

## RÉFÉRENCES / CAT. NB / REFERENCIAS

	16	20	16	20	16	20	16	20
①	E18-70	E20-70						
② ④ ⑤	OR 16	OR 20	OR 160L	OR 20 O	OR 16 T	OR 20 T	OR 16 T	OR 20 T
③			M 7B 20	M 18B	M 7B 20	M 18B		
⑥							CA 120FB	CA 160FB



16	③							M7 * 18	
	⑦	BS 16CT	BS 16CT	BS 16CT	BS 16CT	BS 16CT	BS 16CT	BS 16CT	BS 16CC*
	⑪		22	22	22	34	34	34	
20	③							M18*	
	⑦	BS 20CT	BS 20CT	BS 20CT	BS 20CT	BS 20CT	BS 20CT	BS 20CT	BS 20CC*
	⑪		22	22	22	34	34	34	
∅ (mm)	⑧	6D 5-15*	6D 117-150*	6D 260*	6D 302*	6D 612*	6D 851*	6D 1300*	Voir chapitres 1102 et 1103 See 1102 and 1103 chapters Vease los capitulos 1102 y 1103
	⑩ ⑫	min 5 max 15	7,5 15,75	14 21,5	17,5 22,7	23 32	32 40	38 47	

\* Ajouter B ou R par boulon ou axe rivet (ex AR1D 18B)  
Add B or R for bolt or rivet (i.e. AR1D 18B)  
Añadir B o R para perno o remache (ex AR1D 18B)